



THE COLLEGE OF COMPUTER & INFORMATION SCIENCE  
Northeastern University

William Rawn Associates, Architects, Inc., Boston, MA

# THE COLLEGE OF COMPUTER AND INFORMATION SCIENCE

Located across from the Museum of Fine Arts and facing onto Huntington Avenue (Boston's Avenue of the Arts), the College of Computer and Information Science occupies the lower four floors of a sixteen-story mixed-use academic and residential tower that was the fifth of six building built by our office for Northeastern University as part of the full build-out of its West Campus Master Plan (also by our office).

With clear glass walls opening the 66,000 sf College to the city and filling the interiors with natural light, the building showcases the University's commitment to high-tech education. A wide variety of classroom and lab spaces reinforce the College's mission of bringing together strong academic teaching with cutting-edge research in a collaborative atmosphere for faculty and students.

## AWARDS

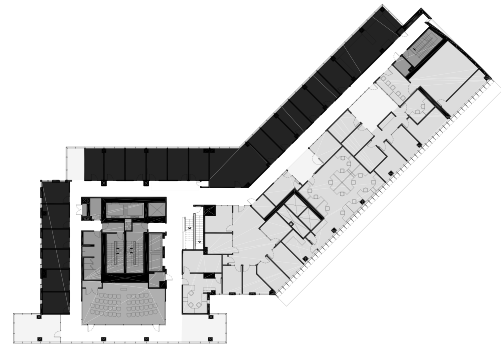
- 2006 Merit Award, New England Chapter, AIA
- 2006 Award for Housing Design, Boston Society of Architects
- 2005 Harleston Parker Medal for Most Beautiful Building in Boston, Boston Society of Architects
- 2005 Higher Educational Facilities Design Award, Boston Society of Architects



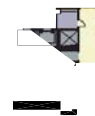
View of glass facade along Huntington Avenue.



View of Interior Street.



Third Floor Plan



Ground Floor Plan

- Interior Street
- Informal Meeting Space
- Classrooms
- Breakout Space
- Faculty Offices
- Research Labs



*View of Breakout Space and Downtown Boston.*

## *Promoting Collaboration*

Three principles, all focused on promoting greater interaction and collaboration, were fundamental to the College's leaders and were used to organize the building:

### **I. MIXING TEACHING AND RESEARCH**

Classrooms, seminar rooms, teaching labs, and research spaces are distributed throughout the College's four floors. This mix of teaching and research broadens contact between students, faculty and researchers.

### **II. CREATING ACCESSIBLE FACULTY**

Faculty offices are deliberately placed across the wide corridor from research labs, rather than within them. This encourages chance meetings and helps ensure accessibility of faculty to students.

### **III. ENCOURAGING INFORMAL INTERACTION**

From the double-height Interior Street which serves as the heart of the building to Breakout Spaces with memorable views of the city to Informal Meeting Spaces along corridors that act as front porches for the research labs, the College is organized so that faculty, researchers and students readily find places to gather and can easily see other groups they might wish to join.



*View of Tiered Classroom.*



*Informal Meeting Space outside Research Lab.*



## PROJECT FACTS

**Northeastern University**  
**College of Computer and Information Science**

**PROJECT LOCATION**  
 Boston, Massachusetts

**CLIENT & CONTACT**  
 Northeastern University  
 Nancy May, Director of Capital Projects  
 617-373-2623

**DATE OF COMPLETION**  
 Fall 2004

**SIZE**  
 66,000 g.s.f.

**ARCHITECT**  
 William Rawn Associates, Architects, Inc.

**STRUCTURAL ENGINEER**  
 LeMessurier Consultants

**MECHANICAL AND ELECTRICAL ENGINEER**  
 Cosentini Associates

**CONSTRUCTION MANAGER**  
 Turner Construction Company

## PROJECT PROGRAM

9 Research Laboratories:

- The Center for Software Sciences
- The Programming Research Laboratory
- The Institute for Complex Scientific Software
- The Wireless Security Laboratory
- The Biological Knowledge Laboratory
- The High Performance Computing Laboratory
- The Network Security Laboratory
- Distributed Computing
- Machine Learning

Teaching Spaces Include:

- Two 75-seat classrooms
- 80-seat Unix lab
- 2 40-seat PC labs
- Seminar Rooms
- 50 person Colloquium Room
- 57 Faculty and Graduate Student Offices



**William Rawn Associates, Architects, Inc.**

10 Post Office Square, Suite 1010, Boston, MA 02109  
 t) 617.423.3470 f) 617.451.9205 [www.rawnarch.com](http://www.rawnarch.com)